

Son 1e Ace Barcelona '20

Mascul BE-23-1035379

Crescator/Grower: Ernst & Sohne

Culoare Ochi/Eye Color: Galben

Culoare/Color: Solzat

Categorie/Category: Maraton

B 23-1035379

" De 379 "

Original Ernst & Söhne

Father 06565-22-87 " Inteelt Speedy "

" Speedy "

1 International Pau (Bordeaux) 2022

1 National Pau (Bordeaux) 2022

90 National Pau 2021

51 Provincial Pau 2021

Mother D-6565-16-752

" 752 "

1 Ace Hen Barcelona 2020

2 Provincial Barcelona 2020

4 National Barcelona 2020

7 Provincial Barcelona 2018

22 National Barcelona 2018

50 National Agen 2017

22 National Agen 2017

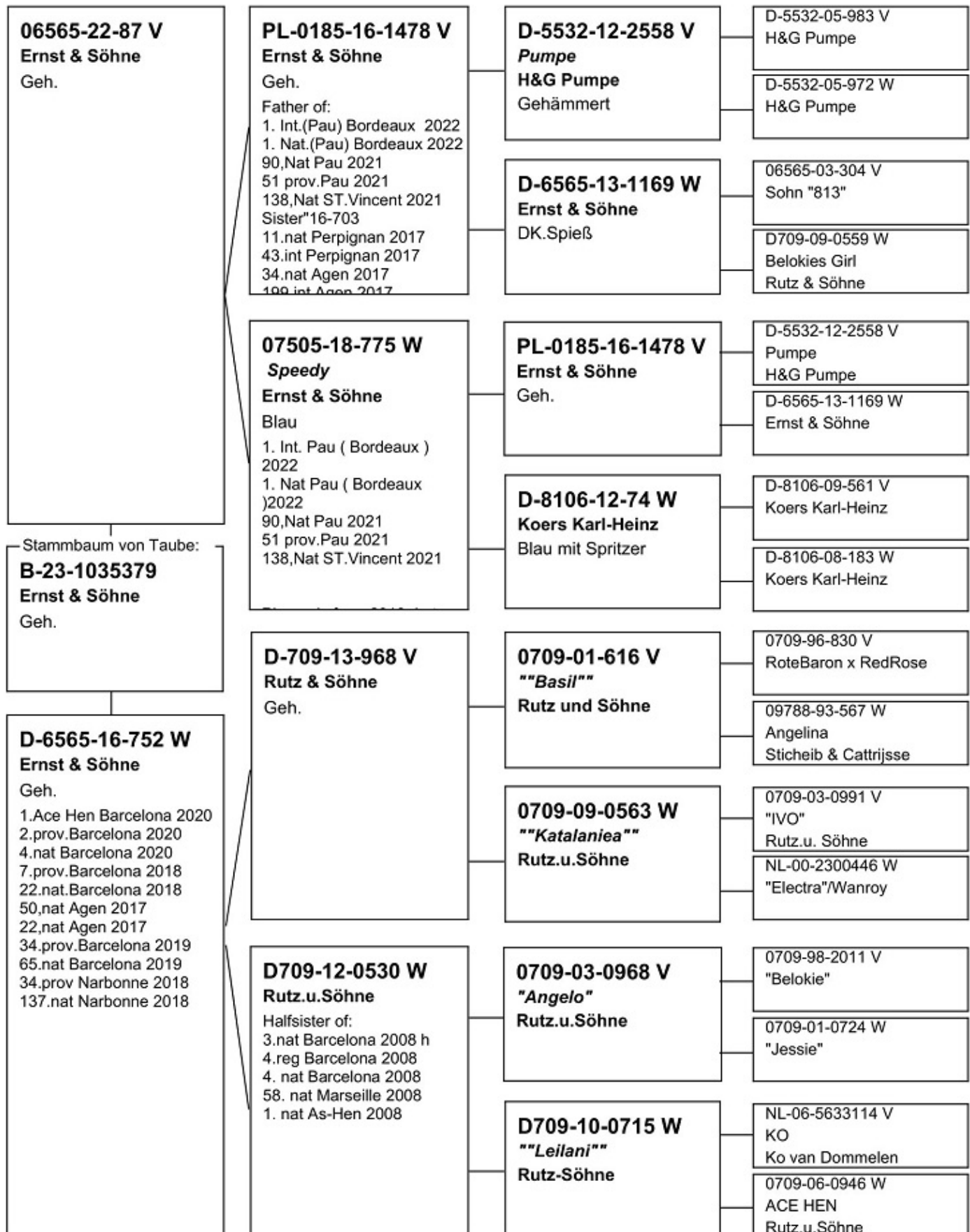
34 Provincial Barcelona 2019

Voiajor.net



Ernst & Söhne

Hauptstraße 26 • 66484 Winterbach
06337-208821 • ernst-winterbach@myquix.de



DV 07505-18-775 W „Speedy“

- 2022 -

1. International Pau (Bordeaux)

1. National Pau (Bordeaux)

- 2021 -

51. Prov. Pau

90. National Pau

138. National St. Vincent



Ernst & Söhne

Hauptstr. 26

66484 Winterbach

Tel.: 06337 208821

DV 6565-19-1254 V

„De As“

1e Ace Cock Germany 2020

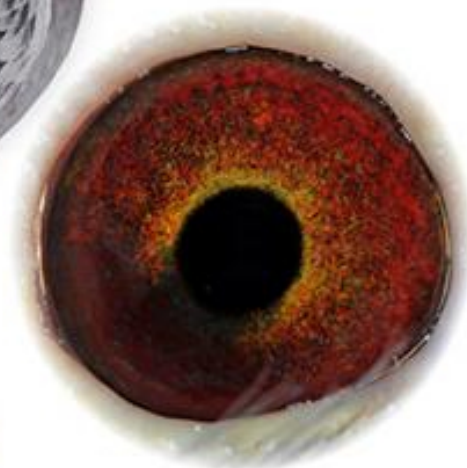
„Extreme Long Distance“

2. Prov. Narbonne

3. National Narbonne

24. Prov. Marseille

28. National Marseille



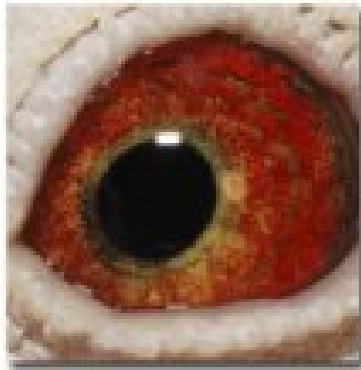
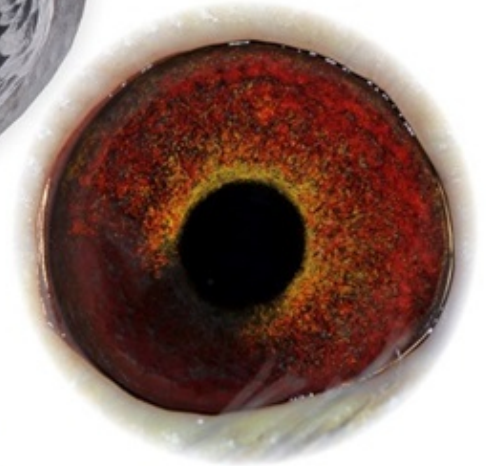
DV 6565-19-1254 V

„De As“

1e Ace Cock Germanny 2020

„Extreme Long Distance“

- 2. Prov. Narbonne
- 3. National Narbonne
- 24. Prov. Marseille
- 28. National Marseille



**Tochter
„Goldenes Zuchtpaar“**

- 2008 -

12/10 Preise 879,63 Asp.

Bestes jähriges Weibchen der
RV Zweibrücken

9. bestes Weibchen der RegV.-Flüge

8e La Scuterraine	558 km gg.	616 Tb.
53e regio.	gg.	2 481 Tb.
8e Auxerre	328 km gg.	707 Tb.
17e Bourges	445 km gg.	884 Tb.
26e Arcis	258 km gg.	996 Tb.
30e Bourges	445 km gg.	1 112 Tb.
34e Ruffec	655 km gg.	807 Tb.
37e Auxerre	328 km gg.	857 Tb.
43e Auxerre	328 km gg.	1 353 Tb.

SG ZOLLER U. ERNST



PIPA.be

Pigeon Paradise

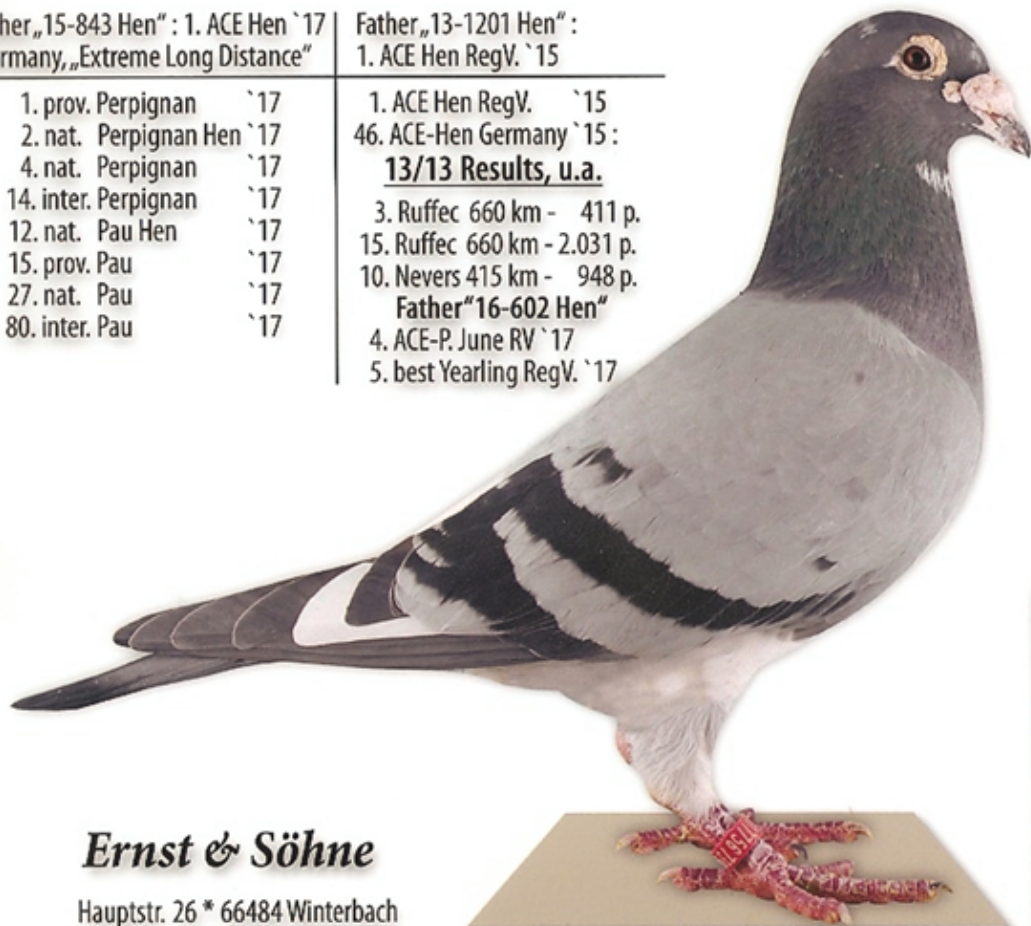
0365 07 14 W

Father „15-843 Hen“ : 1. ACE Hen `17
Germany, „Extreme Long Distance“

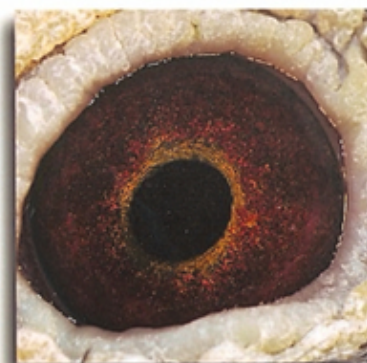
- 1. prov. Perpignan `17
- 2. nat. Perpignan Hen `17
- 4. nat. Perpignan `17
- 14. inter. Perpignan `17
- 12. nat. Pau Hen `17
- 15. prov. Pau `17
- 27. nat. Pau `17
- 80. inter. Pau `17

Father „13-1201 Hen“ :
1. ACE Hen RegV. `15

- 1. ACE Hen RegV. `15
- 46. ACE-Hen Germany `15 :
13/13 Results, u.a.
- 3. Ruffec 660 km - 411 p.
- 15. Ruffec 660 km - 2.031 p.
- 10. Nevers 415 km - 948 p.
- Father "16-602 Hen"**
- 4. ACE-P. June RV `17
- 5. best Yearling RegV. `17



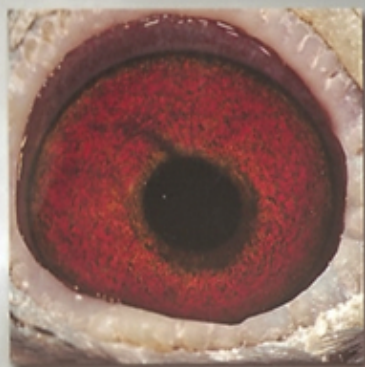
„Hercules“



Ernst & Söhne

Hauptstr. 26 * 66484 Winterbach
Tel.: 06337 208821

D 8228-08-1035 ♂



06565 13 1201 W

-2015-

RegV. 550

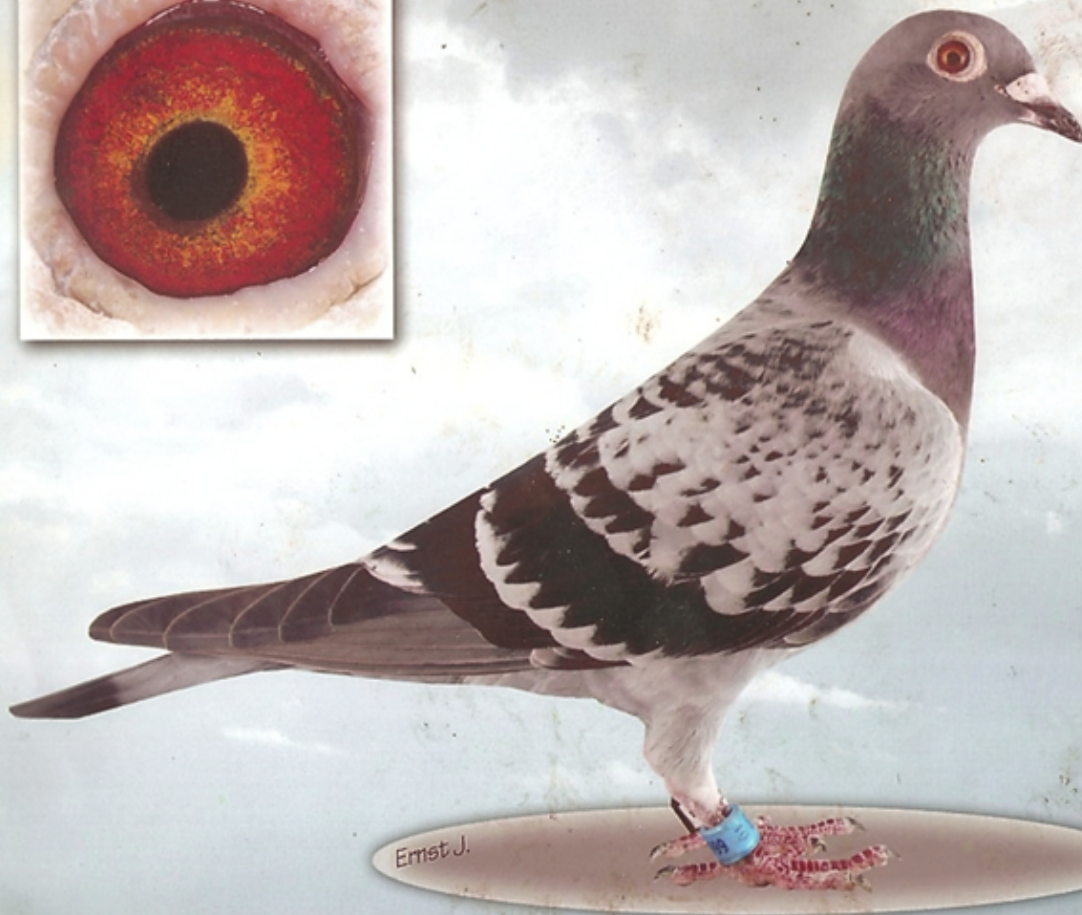
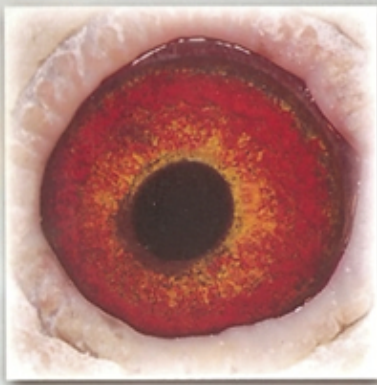
- 1. As-Weibchen mit
5 Pr. 451,75 Asp.
- 1. Bestes Altweibchen
13 Preise

Ernst + Sohn

Hauptstr. 26
66484 Winterbach

Tel.: 06337-208821
Mobil: 01775673944
eMail: ernst-winterbach@myquix.de

06565 13 1201 W



- 2013 -

DV 08228-10-666 ♀

1e Preis national
Perpignan

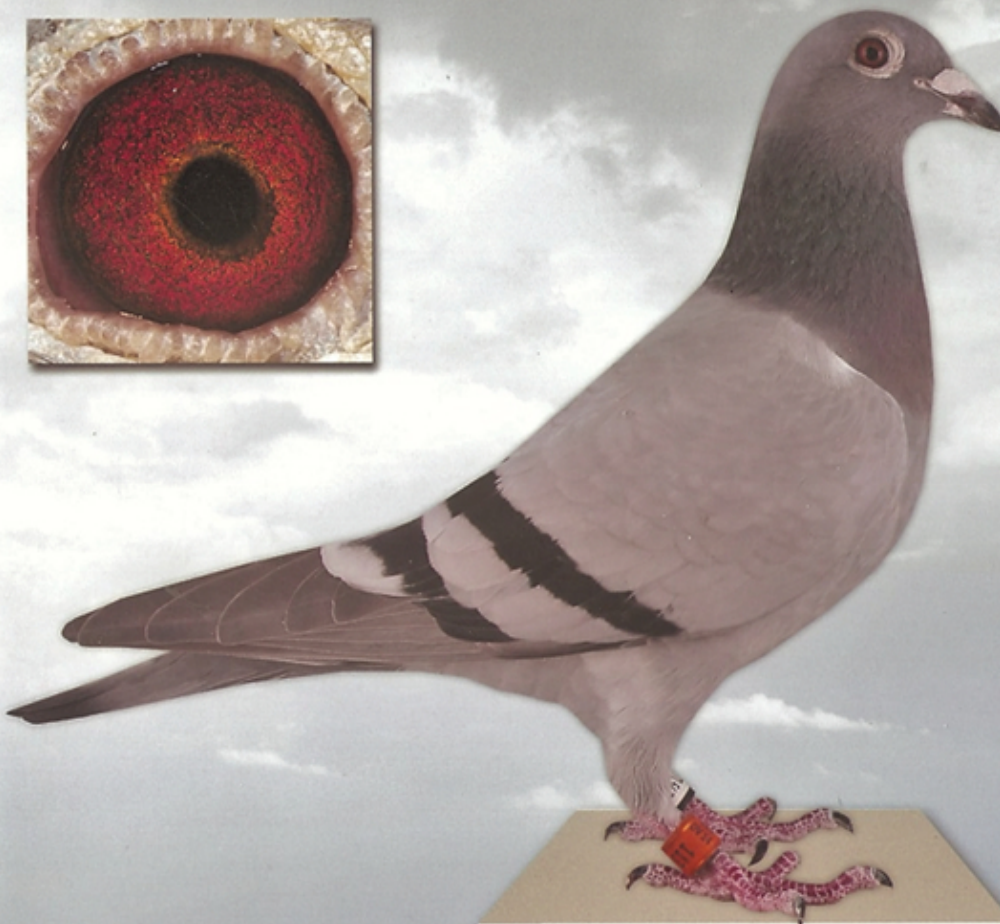
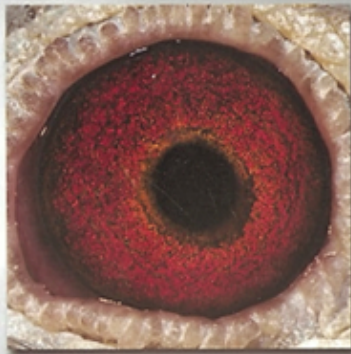
Auflass: 02.08.2013

Zeit: 7 10

Ankunft: 02.08.2013

Zeit: 17 45 14

Ernst J.



6565 14 113 W

-2016-

1. As-Weibchen
Nationale Weitstrecke

2. Nat. Pau 894,65 km
Ankunft: 21:37:26

4. Nat. St. Vincent 916,846 km
Ankunft: 19:04:56

Ernst + Sohn

Hauptstr. 26

66484 Winterbach

Tel.: 06337-208821

Mobil: 01775673944

eMail: ernst-winterbach@myquix.de

6565 14 113 W

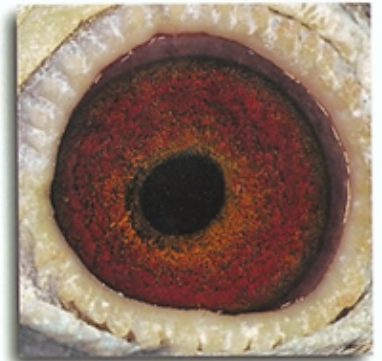
- 2017 -

4. Ace Cock Germany + 31. Ace Cock of Europe

- 7. prov. Barcelona `17
- 14. nat. Barcelona `17
- 111. inter. Barcelona `17
- 7. prov. Perpignan `17
- 13. nat. Perpignan `17
- 172. inter. Perpignan `17
- 89. prov. Carcassone `16
- 171. nat. Carcassone `16
- 264. nat. Barcelona `16
- 74. prov. Marseille `15
- 102. nat. Marseille `15



„LOKI“



Ernst & Söhne

Hauptstr. 26 * 66484 Winterbach
Tel.: 06337 208821

D 6565-14-147 ♂

Top-Results 2016 / 17

- 1. prov. Barcelona `17
- 2. nat. Barcelona `17
- 19. inter. Barcelona `17
- 41. prov. Perpignan `16
- 79. nat. Perpignan `16
- 84. prov. Marseille `16
- 130. nat. Marseille `16



„Bull“



Ernst & Söhne

Hauptstr. 26 * 66484 Winterbach
Tel.: 06337 208821

D 6565-15-837 ♂

1. ACE Hen 2017

1. ACE Hen Germany „Extreme Long Distance“ + 14. ACE Hen of Europe

- 1. prov. Perpignan `17
- 2. nat. Perpignan Hen `17
- 4. nat. Perpignan `17
- 14. inter. Perpignan `17
- 12. nat. Pau Hen `17
- 15. prov. Pau `17
- 27. nat. Pau `17
- 80. inter. Pau `17

Hlf.-Sister 13-1201 =
1. ACE Hen RegV. `15
46. ACE-Hen Germany `15:
13/13 Results

- u.a. 3. Ruffec 660 km - 411 p.
- 15. Ruffec 660 km - 2.031 p.
- 10. Nevers 415 km - 948 p.

Hlf.-Sister 16-602 =
5. best Hen Yearling RegV. `17



Ernst & Söhne

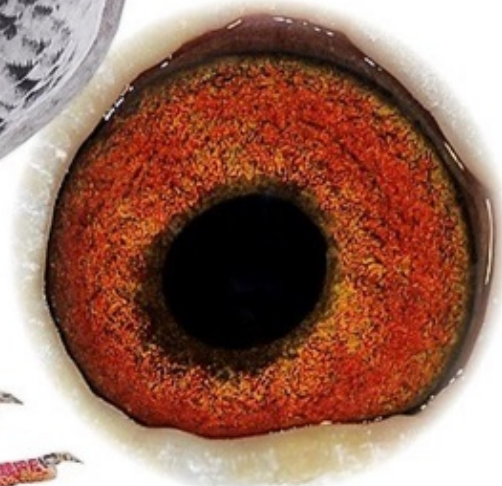
Hauptstr. 26 * 66484 Winterbach
Tel.: 06337 208821

D 06565-15-843 ♀

DV 6565-16-752 W

„Rosine“

- 2. Prov. Barcelona `20
- 4. National Barcelona `20
- 7. Prov. Barcelona `18
- 22. National Barcelona `18
- 34. Prov. Barcelona `19
- 65. National Barcelona `19



Ernst & Söhne

Hauptstr. 26
66484 Winterbach
Tel.: 06337 208821

D 6565-16-640 ♀

„Good Morning“

Hlf-Sister „15-381 ♀“

1. Prov. Perpignan 2018	10. National Carcassonne 2016
4. National Perpignan 2018	8. National Carcassonne Hen 2016
16. Prov. Marseille 2017	9. Internat. Carcassonne Yerling 2016
29. National Marseille 2017	18. Internat. Carcassonne Hen 2016
17. Prov. Perpignan 2017	
32. National Perpignan 2017	

Ernst & Söhne

Hauptstr. 26
66484 Winterbach

Tel.: 06337-208821
eMail: ernst-winterbach@myquix.de



D 6565-16-640 ♀

Results `17

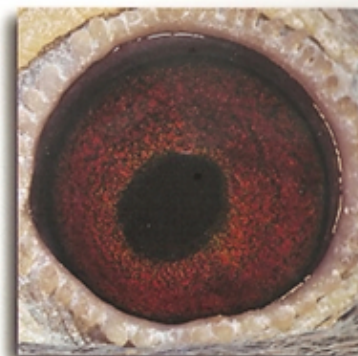
11. nat. Perpignan `17
43. int. Perpignan `17
34. nat. Agen `17
199. int. Agen `17
185. nat. Marseille `17

Halbsister „14-113 Hen“

1. nat. ACE -HEN `16
2. nat. Pau `16
4. nat. St. Vincent `16
5. int. St. Vincent `16
215. int. Pau `16
3. int. ST. Vincent Hen `16



„Maria“



Ernst & Söhne

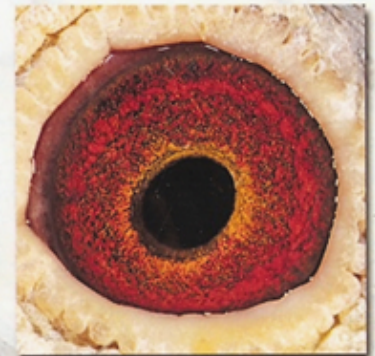
Hauptstr. 26 * 66484 Winterbach
Tel.: 06337 208821

D 6565-16-703 ♀

D 6565-16-757 ♂

„Shadow“

- 1. Prov. Barcelona 2018
- 2. Nat. Barcelona 2018
- 186. Nat. Agen 2017
- 92. Nat. Narbonne 2017



Ernst & Söhne

Hauptstr. 26
66484 Winterbach

Tel.: 06337-208821

eMail: ernst-winterbach@myquix.de

D 6565-16-757 ♂