

PORSCHE PATTAYA 584

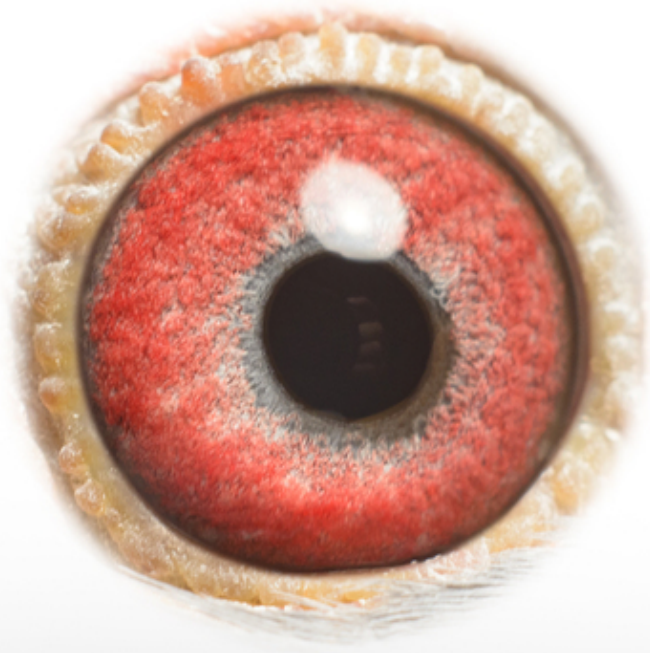
Mascul HU-24-D876584

Crescator/Grower: Norbert T?ri

Culoare Ochi/Eye Color: Alb

Culoare/Color: Albastru

Categorie/Category: General, Fond



HU 24-D876584 ♂





HU 24-D876584

♂PORSCHÉ PATTAYA 584

Türi Norbert
Father:
Original Brockamp Racing Team
Son Pattaya Couple:
4.th. x 5.th place Final Pattaya
International Pigeon Race 2021
against 3.653 pigeons.
Participants all together 1.999 fancier
with 7.401 p.
Mother:
Inbred Porsche 911.
Porsche 911:
Pipa Elite Center. Bleu.
5. Nat. Ace GMD KBDB '15
7. Nat. Chateauroux 25617 p
11. Nat. Bourges 21484 p
38. Nat. Argenton 5327 p
52. Nat. Montlucon 16982 p

Norbert Türi
Cegléd, Pesti út 81/a.
Hungary 2700
info@pigeonperformance.com
www.pigeonperformance.com

DV 00321-23-315

♂SON PATTAYA COUPLE

Brockamp Racing Team
Son Pattaya Couple
4.x 5. place Final Pattaya
International Pigeon Race 2021
against 3.653 pigeons.
Participants all together 1.999 fancier
with 7.401 p.

UAE-20-1005230

♂PATTAYA 230

B 2 E Loft Dubai
Cock Pattaya Koppel
5. Final (530 km)
1 cock arraving Pattaya International
Pigeon Race 2021
against 3.653 pigeons.
Participants all together 1.999 fancier
with 7.401 p.

BE 17-6057667

♂INBRED F-16

B&N van Oeckel
Grandson Crazy Boy:

BE 18-6256981

♀DOUBLE F 16

B.&N. van Oeckel
Halfsister Frilly (183):

DV 04116-20-295

♀PATTAYA 295

H&S Haggennüller
Hen Pattaya Koppel
4. Final (530 km)
Pattaya International Pigeon Race
2021
against 3.653 pigeons.
Participants all together 1.999 fancier
with 7.401 p.

DV 04116-17-248

♂DER 248

H & S Haggennüller
Unbelievable One Loft Breeder

BE 15-4134224

♀DAUGHTER OHLALA

R. + X. Verstraete
Mother Pattaya 295

NL 23-9473145

♀INBRED PORSCHE 911

Pipa Elite Center
Blauw witpen
Father:
Son Porsche 911
DNA Certified
Half brother to:
1e Nt. Limoges 15.565 p.
Brother to:
1e Nat. Ace KBDB
Allround 2021
Mother:
Original Pipa Elite Center
Blauw witpen
DNA Certified
Grandchild Porsche 911 and Esmee
Elzinga
Halfsisters to o.a.:
1e Pont-St-Max 1.420
4e Nat Argenton 23.260 p.
2e Natz Bourges 1.104 p.

BE 21-4152131

♂PORSCHE 911 x LOUISE

PEC
Blauw gehamert
Son Porsche 911
DNA Certified
Half brother to:
1e Nt. Limoges 15.565 p.
Brother to:
1e Nat. Ace KBDB

BE 14-2230911

♂PORSCHE 911

Pipa Elite Center. Bleu.
5. Nat. Ace GMD KBDB '15

BE 14-2230926

♀LOUISE

PEC
Blauw Bont

BE 21-4153230

♀GRANDDAUGHTER
PORSCHE 911

Pipa Elite Center
Blauw witpen
DNA Certified
Grandchild Porsche 911 and Esmee
Elzinga
Halfsisters to o.a.:
1e Pont-St-Max 1.420

BE 14-2230925

♂NESTBROTHER LOUISE

Pipa Elite Center
2e Club Soissons 1.858 p.

BE 17-4062812

♀DAUGHTER PORSCHE 911

Pipa Elite Center
Mother to: