

Nepot 1 AS Hen Barcelona

Mascul BE-24-1088732

Crescator/Grower: Ernst & Shone

Culoare/Color: Albastru

Culoare Ochi/Eye Color: Galben

Categorie/Category: Maraton

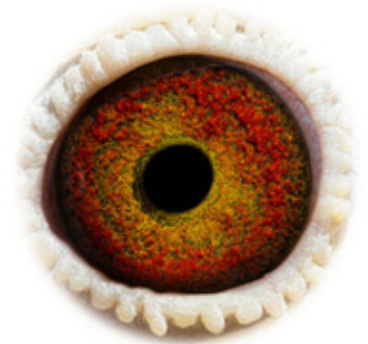
" Nepot 1 Ace Hen Barcelona "

Nepot '' 752 ''

1 Ace Hen Barcelona 2020

2 Provincial Barcelona 2020

4 National Barcelona 2020



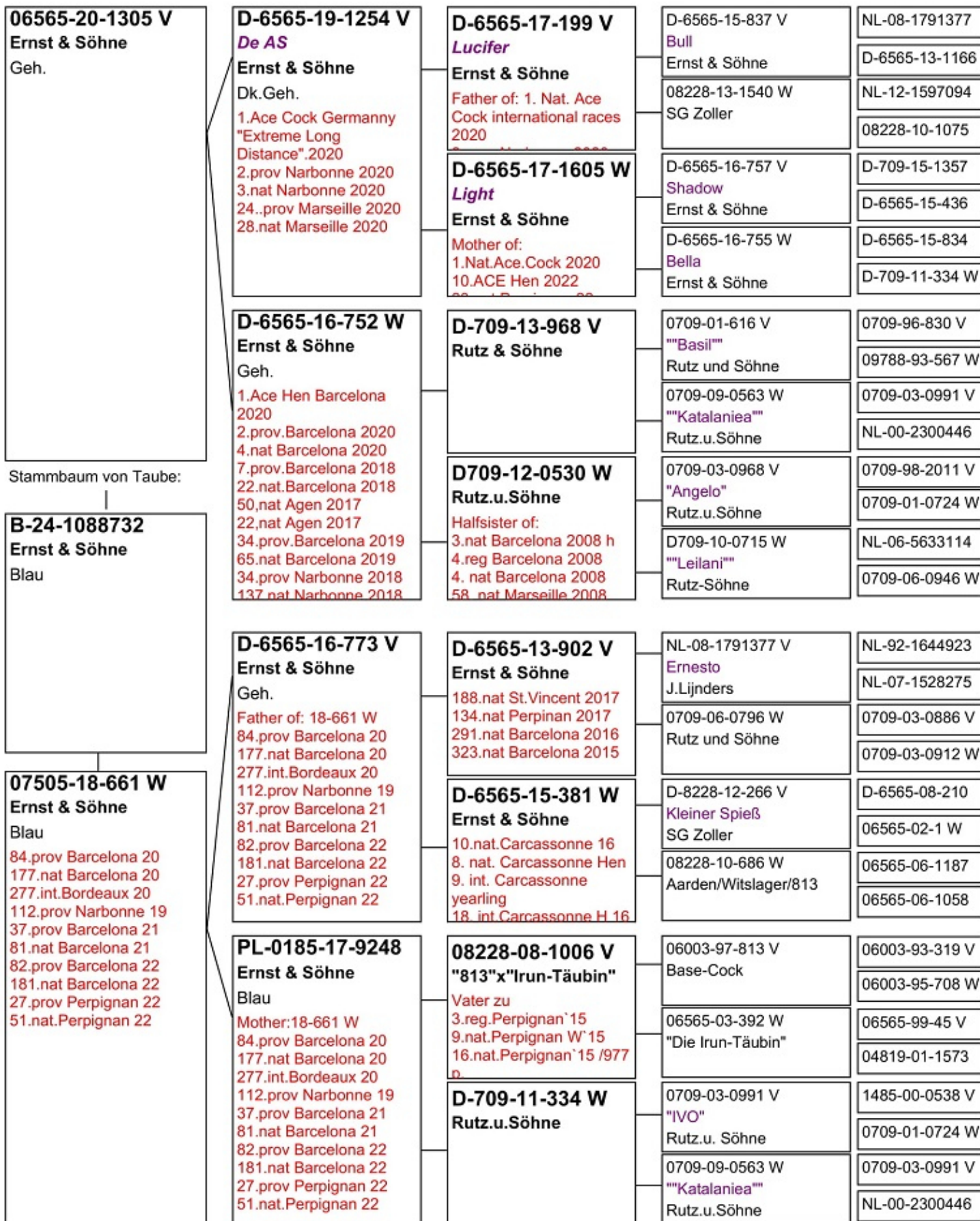
BE 2024-1088732 M
www.voiajor.net

Ernst & Sohne
Germania

Ernst & Söhne

Hauptstraße 26 • 66484 Winterbach

0177-5679344 • ernst-winterbach@myquix.de



1. ACE Hen 2017

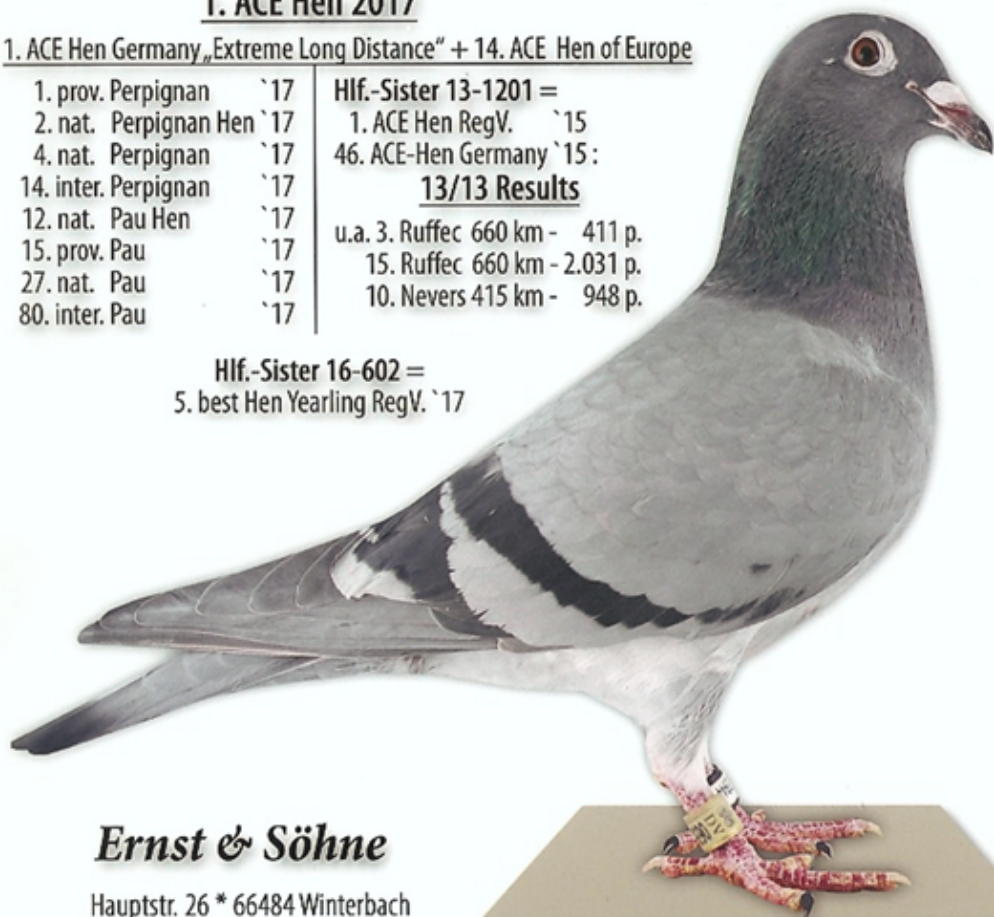
1. ACE Hen Germany „Extreme Long Distance“ + 14. ACE Hen of Europe

- 1. prov. Perpignan `17
- 2. nat. Perpignan Hen `17
- 4. nat. Perpignan `17
- 14. inter. Perpignan `17
- 12. nat. Pau Hen `17
- 15. prov. Pau `17
- 27. nat. Pau `17
- 80. inter. Pau `17

Hlf.-Sister 13-1201 =
1. ACE Hen RegV. `15
46. ACE-Hen Germany `15:
13/13 Results

- u.a. 3. Ruffec 660 km - 411 p.
- 15. Ruffec 660 km - 2.031 p.
- 10. Nevers 415 km - 948 p.

Hlf.-Sister 16-602 =
5. best Hen Yearling RegV. `17



Ernst & Söhne

Hauptstr. 26 * 66484 Winterbach
Tel.: 06337 208821

D 06565-15-843 ♀

DV 6565-16-752 W

„Rosine“

- 2. Prov. Barcelona `20
- 4. National Barcelona `20
- 7. Prov. Barcelona `18
- 22. National Barcelona `18
- 34. Prov. Barcelona `19
- 65. National Barcelona `19



Ernst & Söhne

Hauptstr. 26
66484 Winterbach
Tel.: 06337 208821

D 6565-16-640 ♀

„Good Morning“

Hlf-Sister „15-381 ♀“

1. Prov. Perpignan 2018	10. National Carcassonne 2016
4. National Perpignan 2018	8. National Carcassonne Hen 2016
16. Prov. Marseille 2017	9. Internat. Carcassonne Yerling 2016
29. National Marseille 2017	18. Internat. Carcassonne Hen 2016
17. Prov. Perpignan 2017	
32. National Perpignan 2017	

Ernst & Söhne

Hauptstr. 26
66484 Winterbach

Tel.: 06337-208821
eMail: ernst-winterbach@myquix.de



D 6565-16-640 ♀

Results `17

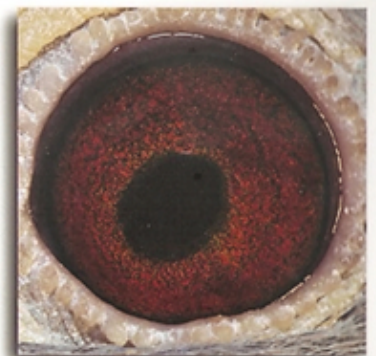
11. nat. Perpignan `17
43. int. Perpignan `17
34. nat. Agen `17
199. int. Agen `17
185. nat. Marseille `17

Halbsister „14-113 Hen“

1. nat. ACE -HEN `16
2. nat. Pau `16
4. nat. St. Vincent `16
5. int. St. Vincent `16
215. int. Pau `16
3. int. ST. Vincent Hen `16



„Maria“



Ernst & Söhne

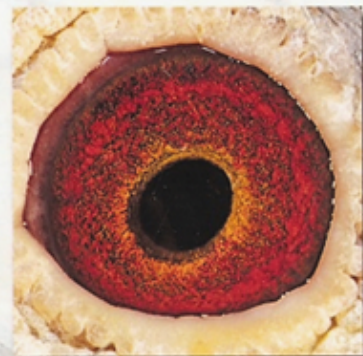
Hauptstr. 26 * 66484 Winterbach
Tel.: 06337 208821

D 6565-16-703 ♀

D 6565-16-757 ♂

„Shadow“

- 1. Prov. Barcelona 2018
- 2. Nat. Barcelona 2018
- 186. Nat. Agen 2017
- 92. Nat. Narbonne 2017



Ernst & Söhne

Hauptstr. 26
66484 Winterbach
Tel.: 06337-208821
eMail: ernst-winterbach@myquix.de

D 6565-16-757 ♂

DV 07505-18-775 W „Speedy“

- 2022 -

- 1. International Pau (Bordeaux)
- 1. National Pau (Bordeaux)

- 2021 -

- 51. Prov. Pau
- 90. National Pau
- 138. National St. Vincent



Ernst & Söhne

Hauptstr. 26
66484 Winterbach
Tel.: 06337 208821

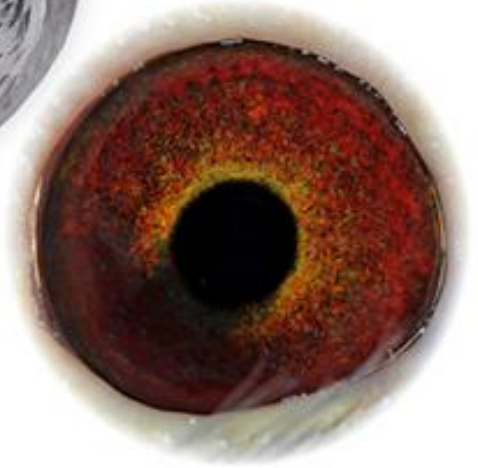
DV 6565-19-1254 V

„De As“

1e Ace Cock Germanny 2020

„Extreme Long Distance“

- 2. Prov. Narbonne
- 3. National Narbonne
- 24. Prov. Marseille
- 28. National Marseille



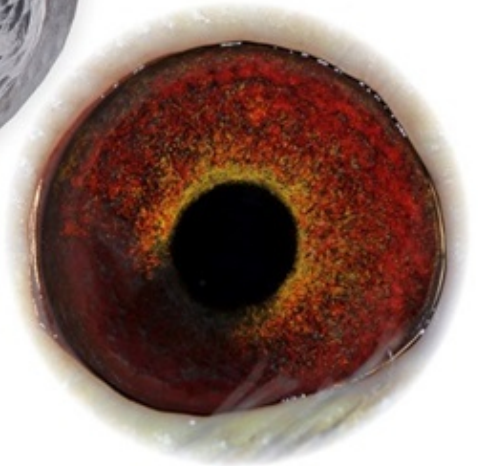
DV 6565-19-1254 V

„De As“

1e Ace Cock Germanny 2020

„Extreme Long Distance“

- 2. Prov. Narbonne
- 3. National Narbonne
- 24. Prov. Marseille
- 28. National Marseille





**Tochter
„Goldenes Zuchtpaar“**

- 2008 -

12/10 Preise 879,63 Asp.
Bestes jähriges Weibchen der
RV Zweibrücken

9. bestes Weibchen der RegV.-Flüge

8e La Scuterraine 558 km gg.	616 Tb.
53e regio.	gg. 2 481 Tb.
8e Auxerre 328 km gg.	707 Tb.
17e Bourges 445 km gg.	884 Tb.
26e Arcis 256 km gg.	996 Tb.
30e Bourges 445 km gg.	1 112 Tb.
34e Ruffec 655 km gg.	807 Tb.
37e Auxerre 328 km gg.	857 Tb.
43e Auxerre 328 km gg.	1 353 Tb.



PIPA.be
Pigeon Paradise

0365 07 14 W

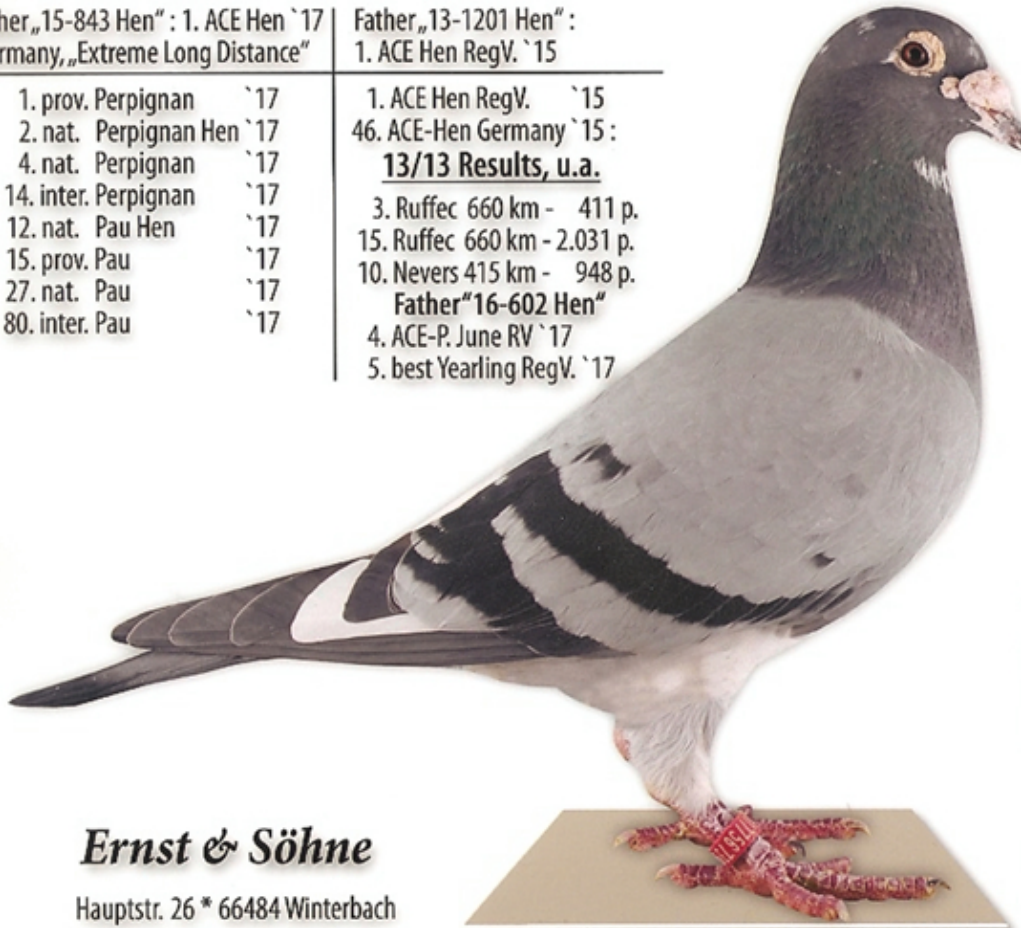
SG ZOLLER U. ERNST

Father „15-843 Hen“ : 1. ACE Hen `17
Germany, „Extreme Long Distance“

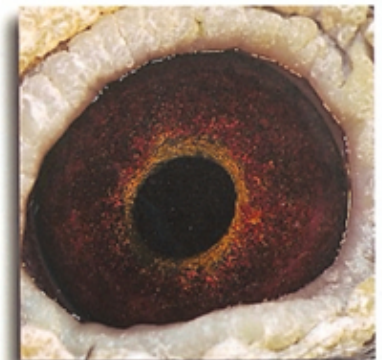
- 1. prov. Perpignan `17
- 2. nat. Perpignan Hen `17
- 4. nat. Perpignan `17
- 14. inter. Perpignan `17
- 12. nat. Pau Hen `17
- 15. prov. Pau `17
- 27. nat. Pau `17
- 80. inter. Pau `17

Father „13-1201 Hen“ :
1. ACE Hen RegV. `15

- 1. ACE Hen RegV. `15
- 46. ACE-Hen Germany `15:
- 13/13 Results, u.a.**
- 3. Ruffec 660 km - 411 p.
- 15. Ruffec 660 km - 2.031 p.
- 10. Nevers 415 km - 948 p.
- Father“16-602 Hen“**
- 4. ACE-P. June RV `17
- 5. best Yearling RegV. `17



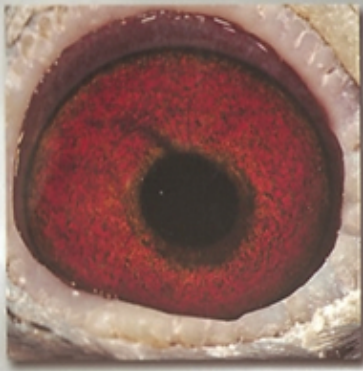
„Hercules“



Ernst & Söhne

Hauptstr. 26 * 66484 Winterbach
Tel.: 06337 208821

D 8228-08-1035 ♂



06565 13 1201 W

06565 13 1201 W

-2015-

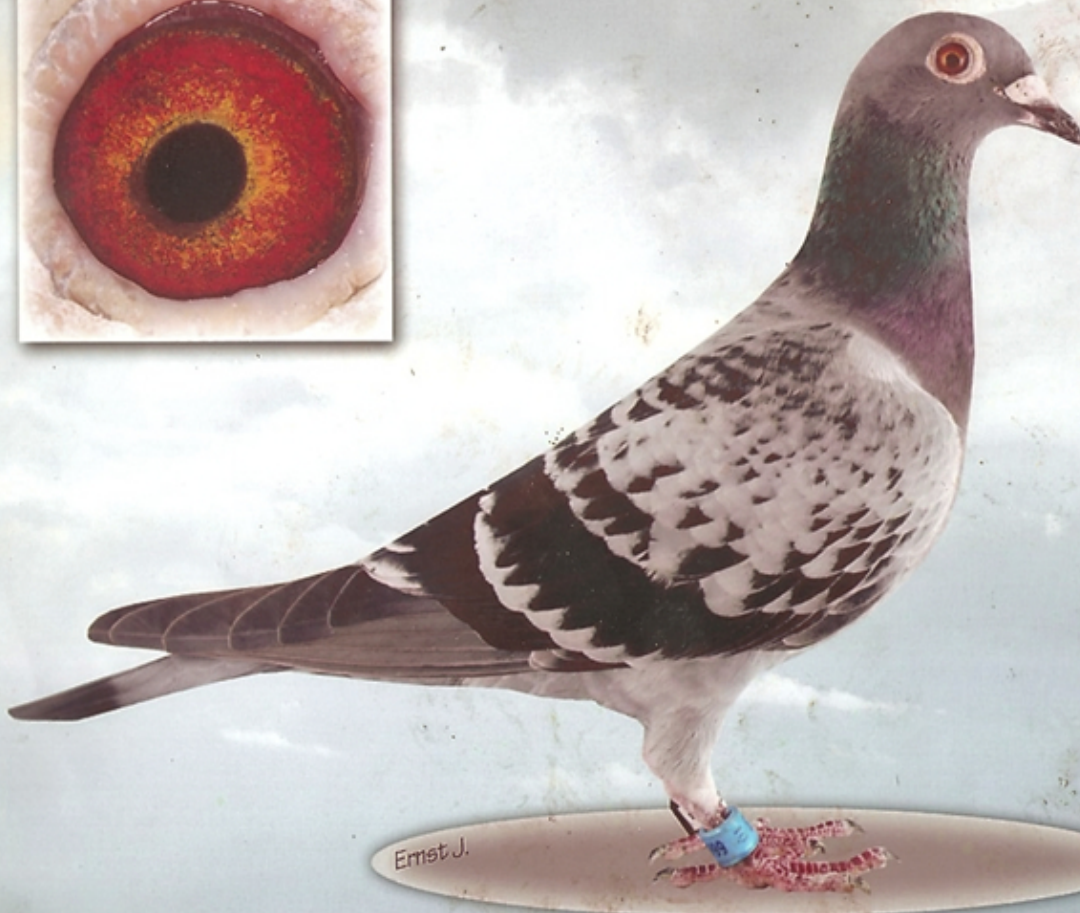
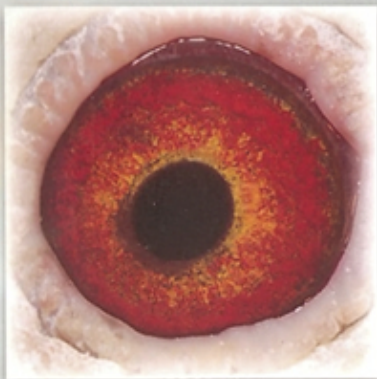
RegV. 550

- 1. As-Weibchen mit
5 Pr. 451,75 Asp.
- 1. Bestes Altweibchen
13 Preise

Ernst + Sohn

Hauptstr. 26
66484 Winterbach

Tel.: 06337-208821
Mobil: 01775673944
eMail: ernst-winterbach@myquix.de



Ernst J.



-2013-

DV 08228-10-666 ♀

1e Preis national

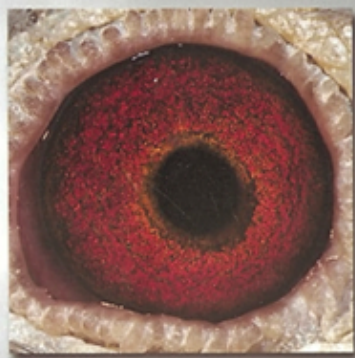
Perpignan

Auflass: 02.08.2013

Zeit: 7 10

Ankunft: 02.08.2013

Zeit: 17 45 14



6565 14 113 W

-2016-

1. As-Weibchen
Nationale Weitstrecke

2. Nat. Pau 894,65 km
Ankunft: 21:37:26

4. Nat. St. Vincent 916,846 km
Ankunft: 19:04:56

Ernst + Sohn

Hauptstr. 26
66484 Winterbach

Tel.: 06337-208821
Mobil: 01775673944

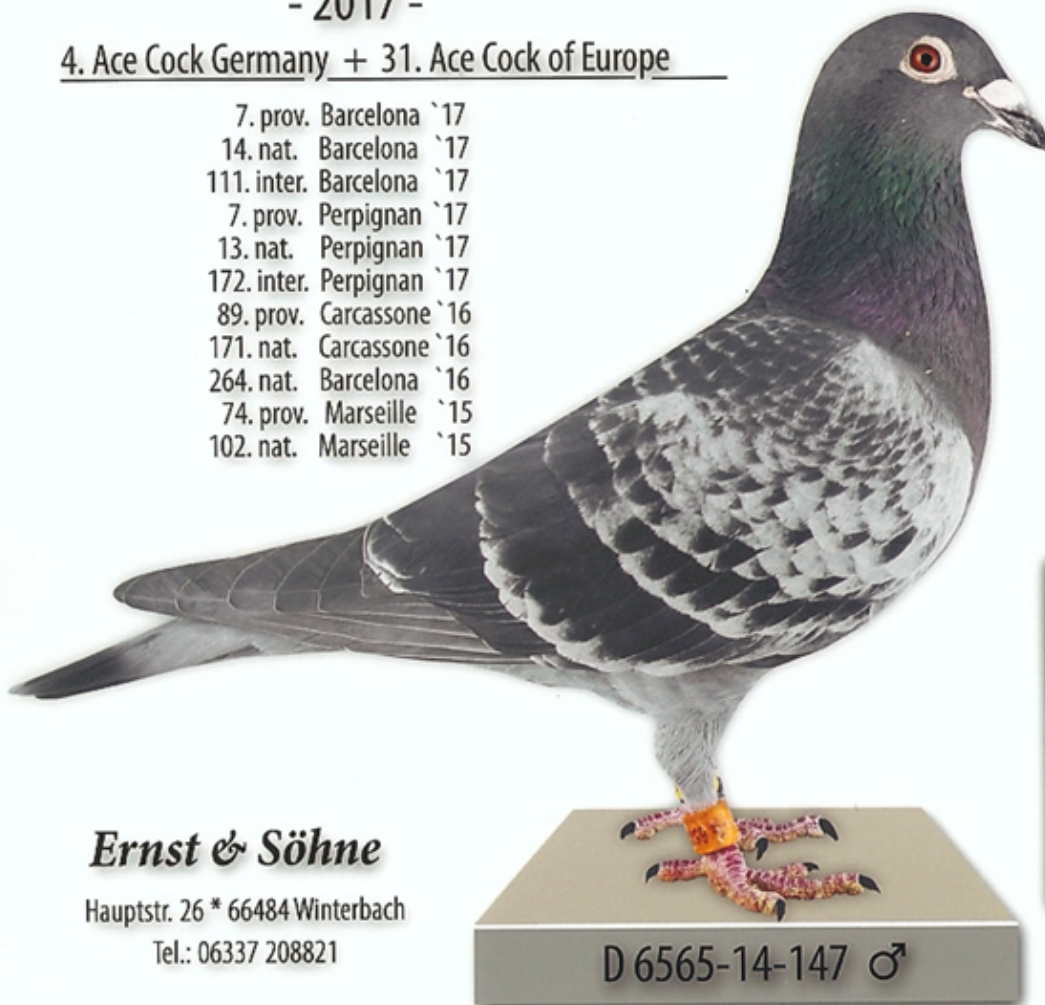
eMail: ernst-winterbach@myquix.de

6565 14 113 W

- 2017 -

4. Ace Cock Germany + 31. Ace Cock of Europe

- 7. prov. Barcelona `17
- 14. nat. Barcelona `17
- 111. inter. Barcelona `17
- 7. prov. Perpignan `17
- 13. nat. Perpignan `17
- 172. inter. Perpignan `17
- 89. prov. Carcassone `16
- 171. nat. Carcassone `16
- 264. nat. Barcelona `16
- 74. prov. Marseille `15
- 102. nat. Marseille `15



„LOKI“



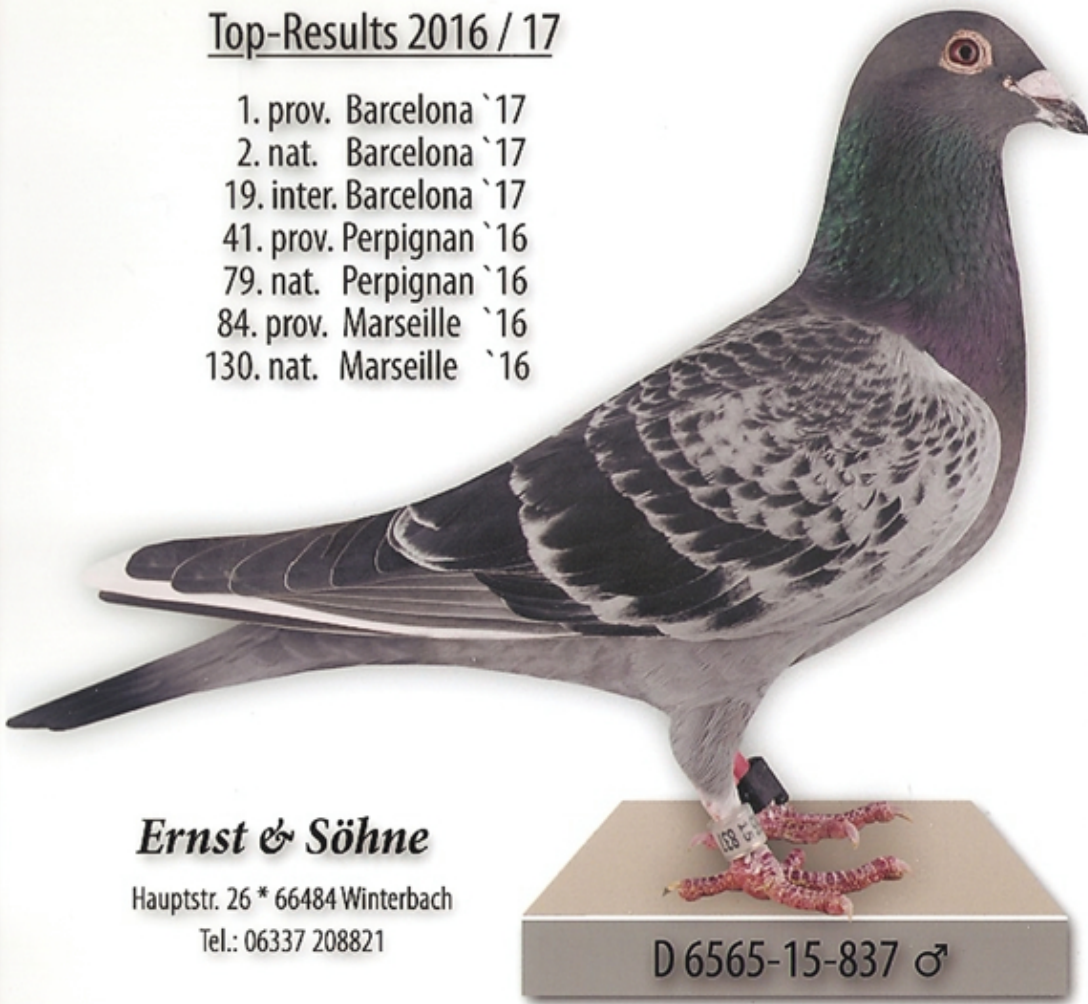
Ernst & Söhne

Hauptstr. 26 * 66484 Winterbach
Tel.: 06337 208821

D 6565-14-147 ♂

Top-Results 2016 / 17

- 1. prov. Barcelona `17
- 2. nat. Barcelona `17
- 19. inter. Barcelona `17
- 41. prov. Perpignan `16
- 79. nat. Perpignan `16
- 84. prov. Marseille `16
- 130. nat. Marseille `16



„Bull“



Ernst & Söhne

Hauptstr. 26 * 66484 Winterbach

Tel.: 06337 208821

D 6565-15-837 ♂